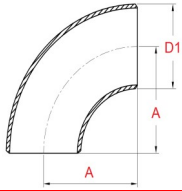


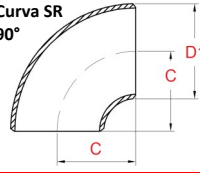
CURVE LR LONG RADIUS R=1,5 D
 CURVE SR SHORT RADIUS R=1 D

RACCORDI SALDARE SECONDO ANSI B16.9

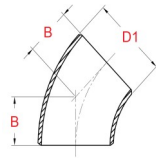
Curva LR 90°



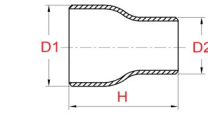
Curva SR 90°



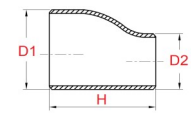
Curva LR 45°



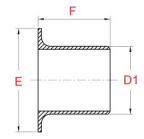
DIMENSIONI (mm)										
D1	D2	A	B	C	E	F	H	H1	L	M
1/2"	-	38	16	-	35	51	-	25	25	-
3/4"	-	38	19	-	43	51	-	25	29	-
3/4"	1/2"	-	-	-	-	-	38	-	29	29
1"	-	38	22	25	51	51	-	38	38	-
1"	1/2"	-	-	-	-	-	51	-	38	38
1"	3/4"	-	-	-	-	-	51	-	38	38
1 1/4"	-	48	25	32	64	51	-	38	48	-
1 1/4"	1/2"	-	-	-	-	-	51	-	48	48
1 1/4"	3/4"	-	-	-	-	-	51	-	48	48
1 1/4"	1"	-	-	-	-	-	51	-	48	48
1 1/2"	-	57	29	38	73	51	-	38	57	-
1 1/2"	1/2"	-	-	-	-	-	64	-	57	57
1 1/2"	3/4"	-	-	-	-	-	64	-	57	57
1 1/2"	1"	-	-	-	-	-	64	-	57	57
1 1/2"	1 1/4"	-	-	-	-	-	64	-	57	57
2"	-	76	35	51	92	64	-	38	64	-
2"	3/4"	-	-	-	-	-	-	64	44,5	-
2"	1"	-	-	-	-	-	76	-	64	51
2"	1 1/4"	-	-	-	-	-	76	-	64	57
2"	1 1/2"	-	-	-	-	-	76	-	64	60
2 1/2"	-	95	44	64	105	64	-	38	76	-
2 1/2"	1"	-	-	-	-	-	-	76	57	-
2 1/2"	1 1/4"	-	-	-	-	-	89	-	76	64
2 1/2"	1 1/2"	-	-	-	-	-	89	-	76	67
2 1/2"	2"	-	-	-	-	-	89	-	76	70
3"	-	114	51	76	127	64	-	51	86	-
3"	1"	-	-	-	-	-	89	-	86	66
3"	1 1/4"	-	-	-	-	-	89	-	86	70
3"	1 1/2"	-	-	-	-	-	89	-	86	73
3"	2"	-	-	-	-	-	89	-	86	76
3"	2 1/2"	-	-	-	-	-	89	-	86	83
4"	-	152	64	102	157	76	-	64	105	-
4"	1"	-	-	-	-	-	102	-	-	-
4"	1 1/4"	-	-	-	-	-	102	-	-	-
4"	1 1/2"	-	-	-	-	-	102	-	105	86
4"	2"	-	-	-	-	-	102	-	105	89
4"	2 1/2"	-	-	-	-	-	102	-	105	95
4"	3"	-	-	-	-	-	102	-	105	98
5"	-	190	79	127	186	76	-	76	124	-
5"	2"	-	-	-	-	-	127	-	124	105
5"	2 1/2"	-	-	-	-	-	127	-	124	108
5"	3"	-	-	-	-	-	127	-	124	111
5"	4"	-	-	-	-	-	127	-	124	117
6"	-	229	95	152	216	89	-	89	143	-
6"	1 1/2"	-	-	-	-	-	140	-	-	-
6"	2"	-	-	-	-	-	140	-	-	-
6"	2 1/2"	-	-	-	-	-	140	-	143	121
6"	3"	-	-	-	-	-	140	-	143	124
6"	4"	-	-	-	-	-	140	-	143	130
6"	5"	-	-	-	-	-	140	-	143	137
8"	-	305	127	203	270	102	-	102	178	-
8"	3"	-	-	-	-	-	152	-	178	152
8"	4"	-	-	-	-	-	152	-	178	156
8"	5"	-	-	-	-	-	152	-	178	162
8"	6"	-	-	-	-	-	152	-	178	168



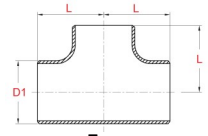
Riduzione concentrica



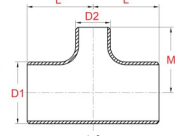
Riduzione eccentrica



Stub end



Tee



Tee ridotto



Fondo bombato



DIMENSIONI (mm)										
D1	D2	A	B	C	E	F	H	H1	L	M
10"	-	381	159	254	324	127	-	127	216	-
10"	4"	-	-	-	-	-	178	-	216	184
10"	5"	-	-	-	-	-	178	-	216	191
10"	6"	-	-	-	-	-	178	-	216	194
10"	8"	-	-	-	-	-	178	-	216	203
12"	-	457	190	305	381	152	-	152	254	-
12"	4"	-	-	-	-	-	203	-	-	-
12"	5"	-	-	-	-	-	203	-	254	216
12"	6"	-	-	-	-	-	203	-	254	219
12"	8"	-	-	-	-	-	203	-	254	229
12"	10"	-	-	-	-	-	203	-	254	241
14"	-	533	222	356	413	152	-	165	279	-
14"	6"	-	-	-	-	-	330	-	279	238
14"	8"	-	-	-	-	-	330	-	279	348
14"	10"	-	-	-	-	-	330	-	279	257
14"	12"	-	-	-	-	-	330	-	279	270
16"	-	610	254	406	470	152	-	178	305	-
16"	8"	-	-	-	-	-	356	-	305	273
16"	10"	-	-	-	-	-	356	-	305	283
16"	12"	-	-	-	-	-	356	-	305	295
16"	14"	-	-	-	-	-	356	-	305	305
18"	-	686	286	457	533	152	-	203	343	-
18"	10"	-	-	-	-	-	381	-	-	-
18"	12"	-	-	-	-	-	381	-	343	321
18"	14"	-	-	-	-	-	381	-	343	330
18"	16"	-	-	-	-	-	381	-	343	330
20"	-	762	318	508	584	152	-	229	381	-
20"	8"	-	-	-	-	-	508	-	-	-
20"	10"	-	-	-	-	-	508	-	-	-
20"	12"	-	-	-	-	-	508	-	-	-
20"	14"	-	-	-	-	-	508	-	381	356
20"	16"	-	-	-	-	-	508	-	381	356
20"	18"	-	-	-	-	-	508	-	381	368
22"	-	838	343	-	-	-	-	254	-	-
24"	-	914	381	610	692	152	508	267	432	-
24"	12"	-	-	-	-	-	508	-	-	-
24"	14"	-	-	-	-	-	508	-	-	-
24"	16"	-	-	-	-	-	508	-	-	-
24"	18"	-	-	-	-	-	508	-	-	-
24"	20"	-	-	-	-	-	508	-	-	-
28"	-	1067	438	-	-	-	-	-	521	-
28"	16"	-	-	-	-	-	610	-	-	-
28"	18"	-	-	-	-	-	610	-	-	-
28"	20"	-	-	-	-	-	610	-	-	-
28"	24"	-	-	-	-	-	610	-	-	-
30"	-	1143	470	-	-	-	-	-	-	-
32"	-	1219	502	-	-	-	-	-	-	-
32"	20"	-	-	-	-	-	610	-	-	-
32"	24"	-	-	-	-	-	610	-	-	-
32"	28"	-	-	-	-	-	610	-	-	-