

STUB END

STUB END tipo SHORT

Per flange ASA lap joint

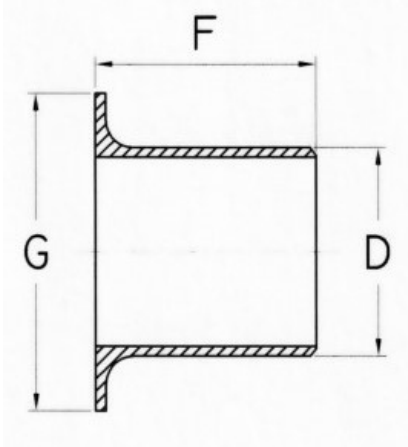
Norme ASME B 16.9

SUPERFICI LAVORATE

MATERIALI:

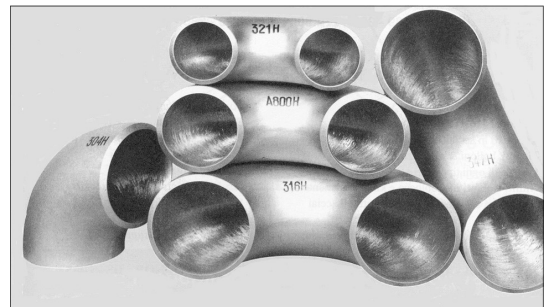
AISI 304/304L - 1.4301/7

AISI 316/316L - 1.4401/4



INCH	D	F	G	SPESSORE		
				SCH. 10S	SCH. 40S	SCH. 80S
1/2"	21,3	51	35	2,11	2,77	3,73
3/4"	26,9	51	43	2,11	2,87	3,91
1"	33,4	51	51	2,77	3,38	4,55
1 1/4"	42,2	51	64	2,77	3,56	4,85
1 1/2"	48,3	51	73	2,77	3,68	5,08
2"	60,3	64	92	2,77	3,91	5,54
2 1/2"	73,0	64	105	3,05	5,16	7,01
3"	88,9	64	127	3,05	5,49	7,62
3 1/2"	101,6	76	140	3,05	5,74	8,08
4"	114,3	76	157	3,05	6,02	8,56
5"	141,3	76	186	3,40	6,55	9,53
6"	168,3	89	216	3,40	7,11	10,97
8"	219,1	102	270	3,76	8,18	12,70
10"	273,1	127	324	4,19	9,27	12,70
12"	323,9	152	381	4,57	9,53	12,70
14"	355,6	152	413	4,78	9,53	12,70
16"	406,4	152	470	4,78	9,53	12,70
18"	457,2	152	533	4,78	9,53	12,70
20"	508,0	152	584	5,54	9,53	12,70
24"	609,6	152	692	6,35	9,53	12,70

**RACCORDI INOX
A NORME ANSI B16.9 - B 16.28**



DIMENSIONI E FIGURE: VEDI PAG. 104