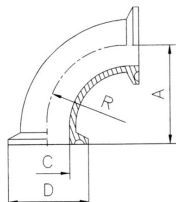


FIGURE FORNIBILI A NORME "BS 4825"

ART. RTC ...BC

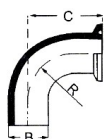
Curva 90° AISI 316L
con due clamp



DIMENSIONI				
DN	A	C	D	R
1/2"	88,9	9,4	25,4	44,4
3/4"	88,9	15,7	25,4	66,5
1"	50,8	22,1	50,5	38,1
1 1/2"	69,9	34,8	50,5	57,2
2"	88,9	47,5	64,0	76,2
2 1/2"	108,0	60,2	77,5	95,3
3"	127,0	72,9	91,0	114,3
4"	168,3	97,4	119,0	152,4

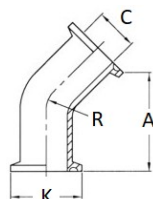
A RICHIESTA:

curva a 90° a saldare con un terminale clamp



ART. RTC ...BK

Curva 45° AISI 316L
con due clamp



DIMENSIONI				
DN	A	C	K	R
1/2"	119,2	9,4	25,4	44,4
3/4"	119,2	15,7	25,4	66,5
1"	98,7	22,1	50,5	38,1
1 1/2"	107,2	34,8	50,5	57,2
2"	130,7	47,5	64,0	76,2
2 1/2"	133,2	60,2	77,5	95,3
3"	141,7	72,9	91,0	114,3
4"	178,0	97,4	119,0	113,1

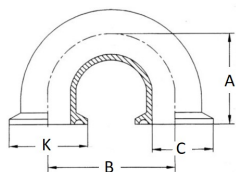
A RICHIESTA:

curva a 45° a saldare con un terminale clamp



ART. RTC ...BCC

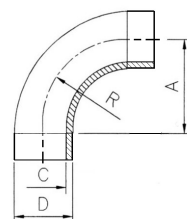
Curva 180° AISI 316L
con due clamp



DIMENSIONI				
DN	A	B	C	K
1"	99,2	73,0	22,1	50,4
1 1/2"	114,7	104,0	34,8	50,4
2"	138,2	151,0	47,5	64,0
2 1/2"	152,7	180,0	60,2	77,5
3"	159,7	194,0	72,9	91,0
4"	165,8	220,3	97,4	119,0

ART. RTC ...W2C

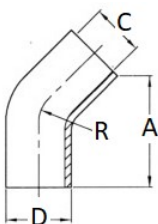
Curva 90° AISI 316L
a mandrinare.



DIMENSIONI				
DN	A	C	D	R
1/2"	76,2	9,4	12,7	44,4
3/4"	76,2	15,7	19,05	66,5
1"	52,4	22,1	25,4	38,1
1 1/2"	74,6	34,8	38,1	57,2
2"	103,2	47,5	50,8	76,2
2 1/2"	131,8	60,2	53,5	95,3
3"	160,3	72,9	76,2	114,3
4"	192,5	97,4	101,6	152,5

ART. RTC ...W2K

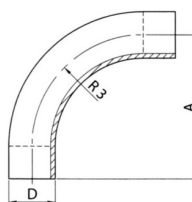
Curva 45° AISI 316L
a mandrinare.



DIMENSIONI				
DN	A	C	D	R
1/2"	97,5	9,4	12,7	44,4
3/4"	97,5	15,7	19,05	66,5
1"	77,0	22,1	25,4	38,1
1 1/2"	85,0	34,8	38,1	57,2
2"	109,0	47,5	50,8	76,2
2 1/2"	111,5	60,2	63,5	95,3
3"	120,0	72,9	76,2	114,3
4"	151,0	97,4	101,6	113,1

ART. RTC ...WLR3

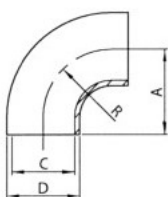
Curva 90° AISI 316L
R3 a mandrinare.



DIMENSIONI		
DN	A	D
1"	125,0	25,4
1 1/2"	132,0	38,1
2"	200,0	50,8
2 1/2"	230,0	63,5
3"	278,0	76,2

ART. RTC ...WLR1

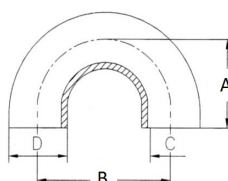
Curva 90° AISI 316L
R1 a saldare.



DIMENSIONI				
DN	A	C	D	R
1"	25,0	22,1	25,4	25,0
1 1/2"	38,0	34,8	38,1	38,0
2"	51,0	47,5	50,8	51,0
2 1/2"	64,0	60,2	63,5	64,0
3"	76,0	72,9	76,2	76,0
4"	101,0	101,6	101,6	101,0

ART. RTC ...W3C

Curva 180° AISI 316L
R1,5 a mandrinare.

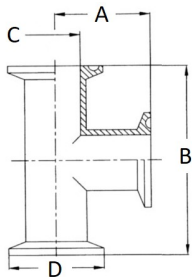


DIMENSIONI				
DN	A	B	C	D
1"	86,5	73,0	22,1	25,4
1 1/2"	102,0	104,0	34,8	38,1
2"	125,5	151,0	47,5	50,8
2 1/2"	140,0	180,0	60,2	63,5
3"	147,0	194,0	72,9	76,2
4"	150,0	220,0	97,4	101,6

FIGURE FORNIBILI A NORME "BS 4825"

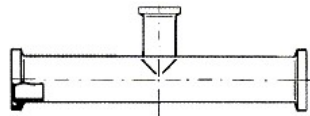
ART. RTC ...BTC

Tees uguali AISI 316L con tre clamp saldati.



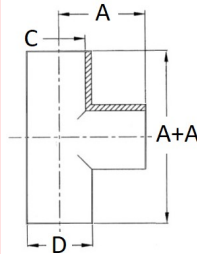
DIMENSIONI				
DN	A	B	C	D
1/2"	66,6	133,2	9,4	25,4
3/4"	66,6	133,2	15,7	25,4
1"	60,3	120,6	22,1	50,5
1 1/2"	69,9	139,8	34,8	50,5
2"	88,9	177,8	47,5	64,0
2 1/2"	88,9	177,8	60,2	77,5
3"	95,3	190,6	72,9	91,0
4"	115,8	231,6	97,4	119,0

A RICHIESTA: Tee con clamp e derivazione centrale ridotta.



ART. RTC ...BTS

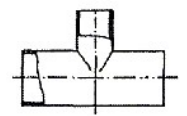
Tee uguali AISI 316L da saldare.



DIMENSIONI				
DN	A	ASME BPE	C	D
1/2"	53,9	47,6	9,4	12,7
3/4"	53,9	50,8	15,7	19,05
1"	28,6 - 47,6	54	22,1	25,4
1 1/2"	42,1 - 57,2	60,3	34,8	38,1
2"	52,4 - 76,2	73	47,5	50,8
2 1/2"	59,5 - 76,2	79,4	60,2	63,5
3"	65,9 - 82,6	85,7	72,9	76,2
4"	87,3 - 98,4	104,8	97,4	101,6

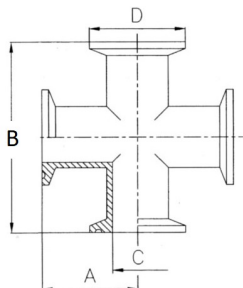
A RICHIESTA:

Tee a saldare con derivazione centrale ridotta.



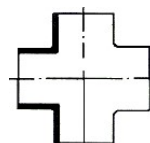
ART. RTC ...BCR

Croce AISI 316L con clamp



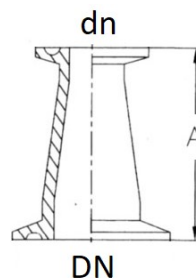
DIMENSIONI				
DN	A	B	C	D
1/2"	66,6	133,2	9,4	25,4
3/4"	66,6	133,2	15,7	25,4
1"	60,3	120,6	22,1	50,5
1 1/2"	69,9	139,8	34,8	50,5
2"	88,9	177,8	47,5	64,0
2 1/2"	88,9	177,8	60,2	77,5
3"	95,3	190,6	72,9	91,0
4"	114,3	228,6	97,4	119,0

A RICHIESTA: Croci a saldare



ART. RTC 210

Riduzione concentrica standard in AISI 316L con clamp.

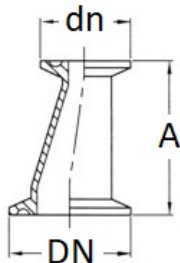


DIMENSIONI		
DN	dn	A
3/4"	1/2"	50,8
1"	1/2" - 3/4"	50,8
1 1/2"	1/2" - 3/4"	76,2
2"	1"	92,4
2 1/2"	1" - 1 1/2"	92,4
3"	1 1/2" - 2" - 2 1/2"	92,4
4"	2" - 2 1/2" - 3"	92,4

RIDUZIONI CONCENTRICHE RICAVATE
DAL PIENO A PAG. 231

ART. RTC 211

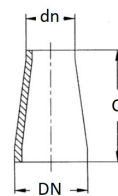
Riduzione eccentrica AISI 316L con clamp.



DIMENSIONI		
DN	dn	A
3/4"	1/2"	50,8
1"	1/2" - 3/4"	50,8
1 1/2"	1"	92,4
2"	1 1/2"	92,4
2 1/2"	2"	92,4
3"	2" - 2 1/2"	92,4
4"	3"	92,4

ART. RTK 216

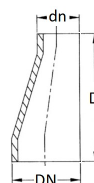
Riduzione concentrica AISI 316L a saldare.



DIMENSIONI			
DN	dn	C	D
3/4"	1/2"	25,4 - 50,8	25,4
1"	1/2" - 3/4"	25,4 - 50,8	25,4
1 1/2"	1/2" - 3/4"	50,8	-
	1"	50,8 - 67	67
2"	1"	101,6	-
	1 1/2"	50,8 - 67	67
2 1/2"	1"	152,4	-
	1 1/2"	101,6	-
3"	2"	50,8 - 67	67
	1"	203,2	-
	1 1/2"	152,4	-
4"	2"	67 - 101,6	67
	2 1/2"	50,8 - 67	67
	1 1/2"	254	-
	2"	203,2	-
4"	2 1/2"	152,4	-
	3"	67 - 101,6	67

ART. RTK 217

Riduzione eccentrica AISI 316L a saldare.



N.B.

MISURE NON IMPEGNATIVE