

RACCORDI "SMS"

Precodice: "RXS" - AISI 304L - AISI 316L

Ricavati da particolari stampati a caldo o laminati e solubilizzati in versione a saldare o a mandrinare.

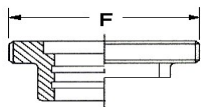
Lucidatura esterna a norme DIN e satinatura interna a norme SMS

Guarnizioni: EPDM - NBR - VITON® - SILICONE - PTFE

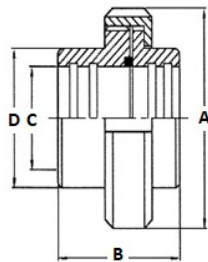
Pressione d'esercizio: 16 bar



A RICHIESTA:



DN	F	PASSO
25	40	1/6"
38	60	1/6"
51	70	1/6"
63	85	1/6"
76	98	1/6"
101	132	1/6"
104	125	1/4"



GUARNIZIONE
ART. 142



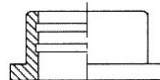
DIMENSIONI DEL BOCCHETTONE A MANDRINARE

DN	A	B	C	D	E	F	G
25	51	38	25,4	32,0	32,0	25,4	5,5
38	74	44	38,1	48,0	48,0	38,1	5,5
51	84	46	50,8	51,0	61,0	50,8	5,5
63	100	56	63,5	73,5	73,5	63,5	5,5
76	114	66	76,2	86,0	86,0	76,0	5,5
101	154	61	101,6	116,0	113,5	101,5	5,5
104	140	61	104,0	112,0	118,0	104,0	5,5

ART. 141
FEMMINA
A MANDRINARE



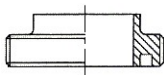
ART. 143
MASCHIO A
MANDRINARE



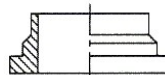
ART. 145
FEMMINA A
SALDARE



ART. 103
FEMMINA CORTA
A SALDARE



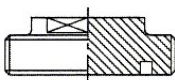
ART. 146
MASCHIO A
SALDARE



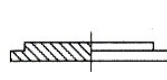
ART. 153
MASCHIO CORTO
A SALDARE



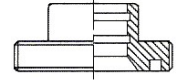
ART. 114
TAPPO
FEMMINA



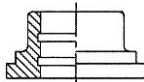
ART. 115
TAPPO MASCHIO
LISCIO



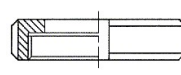
ART. 105 - 106
FEMMINA RIDOTTA A
MANDRINARE/SALDARE



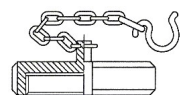
ART. 115 - 116
MASCHIO RIDOTTO A
MANDRINARE/SALDARE



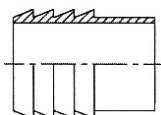
ART. 144
GIRELLA
AISI 304L



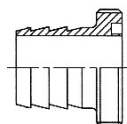
ART. 124
GIRELLA CIECA
CON CATENELLA
AISI 304L



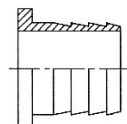
ART. 140
PORTAG. A SALDARE
mm. 28,6 - 41,3 - 54
66,7 - 79,4 - 109



ART. 147
PORTAGOMMA
FEMMINA



ART. 148
PORTAGOMMA
MASCHIO



RACCORDI "RJT - BS"

Precodice: "RBS" AISI 304L - AISI 316L

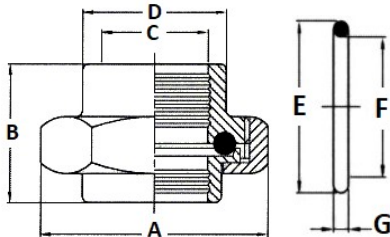
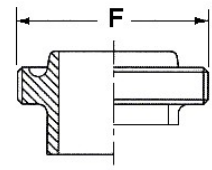
Ricavati da particolari stampati a caldo o laminati e solubilizzati, a saldare o mandrinare.

Lucidatura esterna a norme DIN e satinatura interna a norme SMS

Guarnizioni: EPDM - VITON® - SILICONE

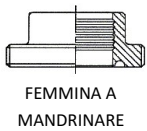
Pressione d'esercizio 16 bar

A RICHIESTA:

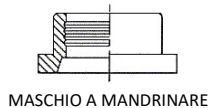


DIMENSIONI DEL BOCCHETTONE A MANDRINARE							
DN	A	B	C	D	E	F	G
25	51	38	25,4	32,0	32,0	25,4	5,5
38	74	44	38,1	48,0	48,0	38,1	5,5
51	84	46	50,8	51,0	61,0	50,8	5,5
63	100	56	63,5	73,5	73,5	63,5	5,5
76	114	66	76,2	86,0	86,0	76,0	5,5
101	154	61	101,6	116,0	113,5	101,5	5,5

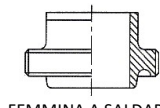
DN	F	PASSO
25	46	1/8"
38	58	1/8"
51	73	1/6"
63	85	1/6"
76	98	1/6"
101	123	1/6"



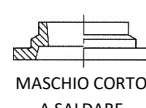
FEMMINA A MANDRINARE



MASCHIO A MANDRINARE



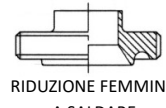
FEMMINA A SALDARE



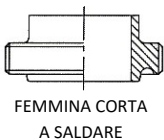
MASCHIO CORTO A SALDARE



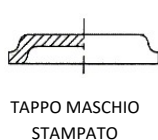
RIDUZIONE MASCHIO A MANDRINARE



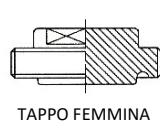
RIDUZIONE FEMMINA A SALDARE



FEMMINA CORTA A SALDARE



TAPPO MASCHIO STAMPATO



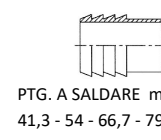
TAPPO FEMMINA



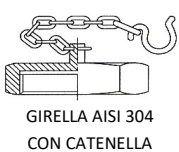
PORTAGOMMA FEMMINA



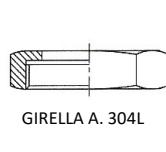
PORTAGOMMA MASCHIO



PTG. A SALDARE mm. 28,6 41,3 - 54 - 66,7 - 79,4 - 109



GIRELLA AISI 304 CON CATENELLA



GIRELLA A. 304L



FEMMINA FILETT. GAS MASCHIO



MASCHIO FILETT. GAS MASCHIO



FEMMINA FILETT. GAS FEMMINA



MASCHIO FILETT. GAS FEMMINA

RACCORDI "MACON"



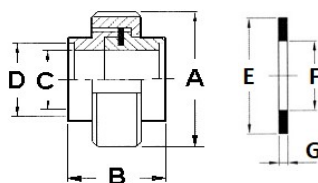
Precodice: "RXM" AISI 304L - AISI 316L

Ricavati da particolari stampati a caldo o laminati e solubilizzati.

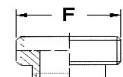
Raccordo alimentare da saldare, lucidato esternamente a norme DIN e satinato internamente a norme SMS.

Guarnizioni: EPDM - Pressione d'esercizio 16 bar

A RICHIESTA:



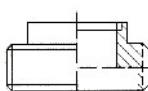
DIMENSIONI							
DN	A	B	C	D	E	F	G
40	70	37	40	43,3	50	43,5	3
50	80	37	50	53,3	62	53,5	3
60	99	37	60	63,6	73	63,5	3
70	105	37	70	73,3	80	73,5	3
80	116	37	80	83,4	95	83,5	4
100	140	37	100	104	117	103,5	4



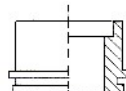
DN	F	PASSO
40	54	1/3"
50	66	1/3"
60	78	1/3,5"
70	89	1/3,5"
80	102	1/4"
100	124	1/4"

DN 40
→
DN 100

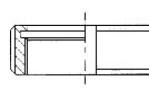
FEMMINA A SALDARE 304L - 316L



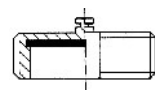
MASCHIO A SALDARE 304L - 316L



GIRELLA AISI 304L

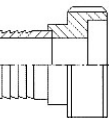


GIRELLA CIECA AISI 304L

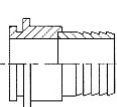


DN 40
→
DN 80

FEMMINA CON PORTAGOMMA AISI 316L



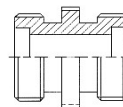
MASCHIO CON PORTAGOMMA AISI 316L



PORTAGOMMA DA SALDARE AISI 316L mm. 43 - 53 - 63,5 - 73 - 83



GIUNZIONE A DOPPIA FEMMINA AISI 316L



RACCORDI "ISS - IDF"

Precodice: "RDS" AISI 304L - AISI 316L

Ricavati da particolari stampati a caldo o laminati e solubilizzati, a saldare o mandrinare.

Girella esagonale (AISI 304L) o tonda con e senza fresature.

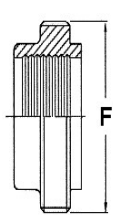
Lucidatura esterna a norme DIN e satinatura interna a norme SMS

Guarnizioni: EPDM - VITON® - SILICONE

Pressione d'esercizio 16 bar

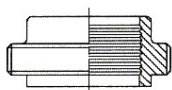
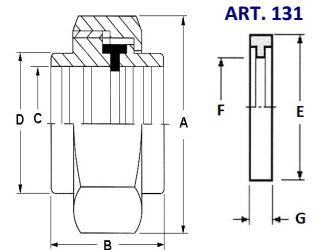


A RICHIESTA:

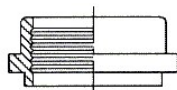


DN	F	PASSO
25	37	1/8"
38	50	1/8"
51	64	1/8"
63	77	1/8"
76	91	1/8"
101	118	1/8"

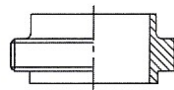
DIMENSIONI DEL BOCCHETTONE A GIRELLA TONDA							
DN	A	B	C	D	E	F	G
25	46	40	25,4	29,0	32,5	23,0	7,0
38	60	43	38,1	42,5	39,0	29,5	7,0
51	75	48	50,8	56,0	46,0	35,5	7,0
63	90	58	63,5	69,7	59,5	48,5	7,0
76	105	63	76,2	82,3	73,0	60,5	7,0
101	134	63	101,6	108,4	86,5	73,5	7,0



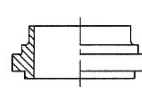
ART. 100
FEMMINA A
MANDRINARE



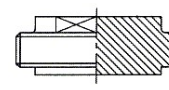
ART. 111
MASCHIO A
MANDRINARE



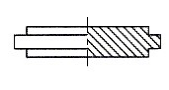
ART. 102
FEMMINA A
SALDARE



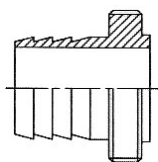
ART. 112
MASCHIO A
SALDARE



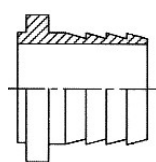
ART. 104
TAPPO
FEMMINA



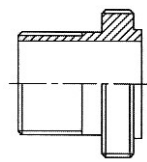
ART. 114
TAPPO MASCHIO



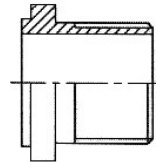
ART. 143
PORTAGOMMA
FEMMINA



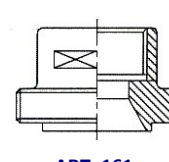
ART. 144
PORTAGOMMA
MASCHIO



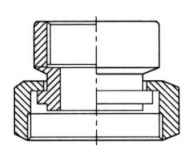
ART. 153
FEMMINA CON
FILETTO GAS
MASCHIO



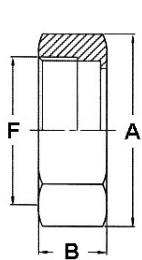
ART. 154
MASCHIO CON
FILETTO GAS
MASCHIO



ART. 161
FEMMINA CON
FILETTO GAS
FEMMINA

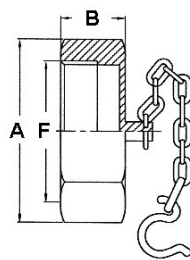


ART. 162
MASCHIO CON
FILETTO GAS
FEMMINA

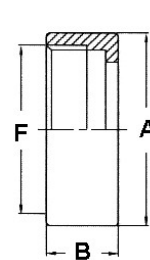


ART. 121
GIRELLA
ESAGONALE

DIMENSIONI			
DN	A	B	F
25	46	30	37-8
38	60	30	50-8
51	75	30	64-8
63	90	30	77-8
76	105	30	91-8
101	134	30	118-8

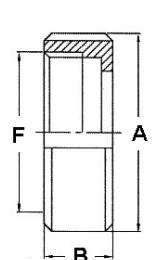


ART. 124
GIRELLA CIECA
ESAGONALE
CON CATENELLA



ART. 122
GIRELLA
TONDA LISCIA

DIMENSIONI			
DN	A	B	F
25	44,5	30	37-8
38	57,0	30	50-8
51	70,0	30	64-8
63	85,5	30	77-8
76	101,5	30	91-8
101	129,0	30	118-8



ART. 123
GIRELLA TONDA
CON FRESATURE