

VOLANTINI, POMELLI E MANOPOLE (cod. UG - MAR)



VOLANTINI, MANOPOLE E MANIGLIE IN PLASTICA NERA

Filetto **inox A.303**



Volantino zigrinato
filetto maschio
Cod. UG art. ZPX
ø 22/26



Volantino a 6 lobi
filetto femmina
Cod. UG art. VBX
ø 20/30/40/50/60



Volantino a 6 lobi
filetto maschio
Cod. UG art. VPX
ø 20/30/40/50/60



Manopola girevole
filetto maschio
Cod. UG art. MEPX
ø 23x70 / 26x90



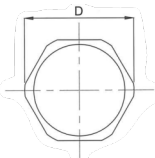
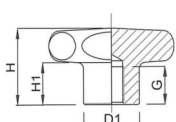
Maniglia a ripresa
filetto maschio
Cod. UG art. KRPX
Lunghezza 42/63/80

VOLANTINO PIENO A LOBI FEMMINA - A.304



Lucido a specchio

Cod. MAR



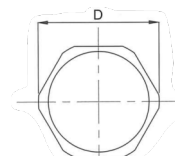
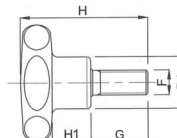
Articolo	D	D1	H	H1	G	Filetto
	mm	mm	mm	mm	mm	mm
30000E/27	27	15	19	10	10	M5
30010E/33	33	19	23	12	12	M6
30020E/40	40	21	27	15	13	M8
30030E/50	50	25	33	17,5	17	M10
30040E/60	60	27	37	20	20	M12

VOLANTINO PIENO A LOBI MASCHIO - A.304



Lucido a specchio

Cod. MAR

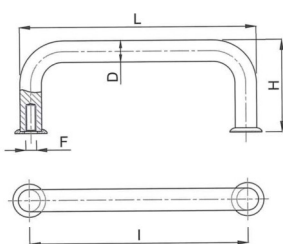


Articolo	D	D1	H	H1	G	Filetto
	mm	mm	mm	mm	mm	mm
30060E/27	27	15	30	10	10	M6
30070E/33	33	19	43	11	20	M8
30080E/40	40	21	47	15	20	M8
30090E/50	50	25	63	17,5	30	M10
30100E/60	60	27	77	20	40	M12

MANIGLIA CURVA CON RONDELLA D'APPOGGIO - A.304



Cod. MAR



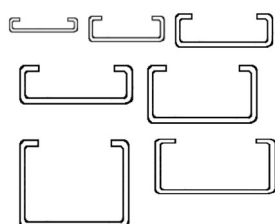
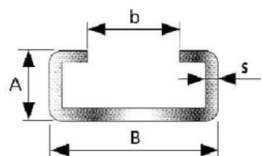
Articolo	Finitura	L	I	D	H	Filetto
		mm	mm	mm	mm	mm
40003L	Lucida	98	88	10	43	M5x10
40003S	Sabbiata	98	88	10	43	M5x10
40004L	Lucida	110	100	10	43	M5x10
40004S	Sabbiata	110	100	10	43	M5x10
40005L	Lucida	130	120	10	43	M5x10
40005S	Sabbiata	130	120	10	43	M5x10
40006L	Lucida	190	180	10	43	M5x10
40006S	Sabbiata	190	180	10	43	M5x10

Altre misure e altri articoli fornibili su richiesta

PROFILI A "C" (cod. YC)

In A.304 o acciaio zincato

Lunghezze standard mm. 2000/3000
Su richiesta mm. 6000



Articolo	Kg/m	B	A	b	s
		mm	mm	mm	mm
C1	0,28	24	5,2	17,5	1
C3	0,49	20	10	10	1,5
C5	0,82	28	12	14	1,5
C9	1,43	38	18	22	2
C10	0,95	30	24	20	1,5
C11	2,05	45	40	31	2
C12	2,15	60	20	36	2,5